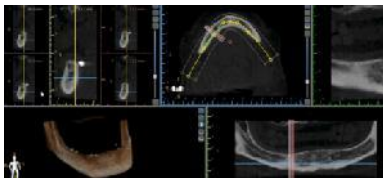


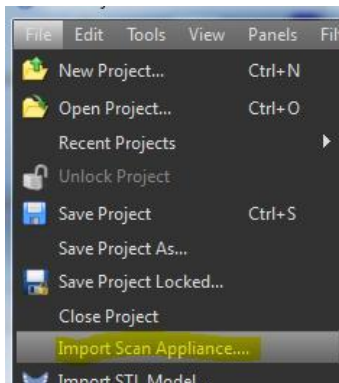


## Importing a Scan Appliance

Scan Appliances can be imported into the patient scan, in order to assist with exact STL model scan alignments, or for surgical guide fabrication for mostly or fully edentulous cases.



Prior to importing the scan appliance, open the patient's case.



Click File menu then Import Scan Appliance.

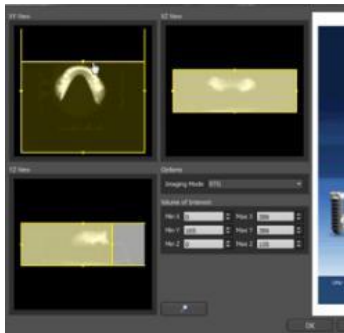


Select the desired Scan Appliance DICOM files from its stored location, then click OK in the Select DICOM Series Window.

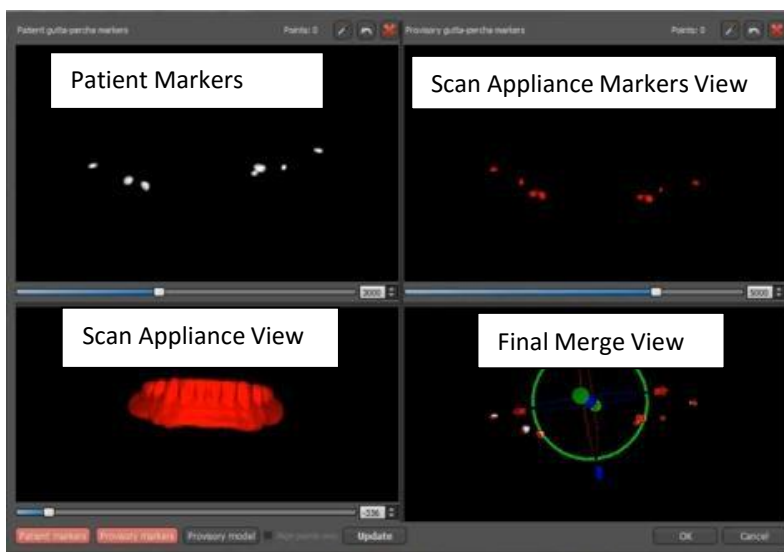


**BlueSkyPlan.com**

Support phone:  
1-312-344-3950  
plan@blueskybio.com



Crop the scan appliance images using the appropriate sliders, in any or all of the relevant views in order to help with the merge and limit memory usage. Click OK when done.



The Scan Appliance Merge Window will appear. In most situations, the software will merge the scan appliance to the patient scan automatically, and both sets of markers will coincide in the bottom right merge view.

If both sets of markers do not appear aligned in the Final Merge view:

1) Adjust the density sliders at the bottom of the views so they are more distinct.

2) Click on the dropper  icon, then

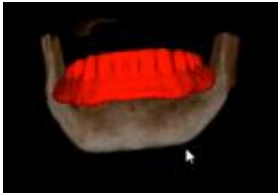
hold the <SHIFT> key and click on each of the markers in both marker views.

Click the Update button to view the alignment, then click OK.

It is recommended to use 'DentalMark for Cone Beam CT Markers' for a quick and accurate merge.

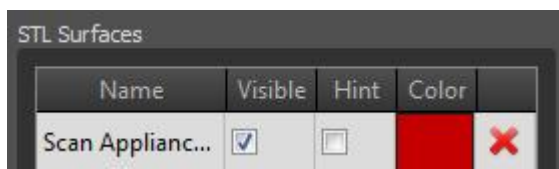


The scan appliance will appear in position superimposed on the patient 3D scan.



### ADDITIONAL FUNCTIONALITY

Once the Scan Appliance is imported into the treatment plan additional functionality can be used.



Double click on the scan appliance in the 3D window. This will open up the Surfaces Panel.

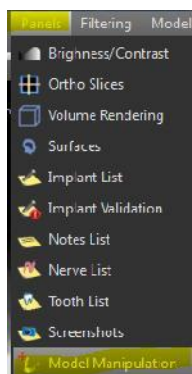
Click on the Visible checkbox to toggle the scan appliance on or off.

Click on the Hint checkbox to see an outline of the scan appliance over the 2D images.

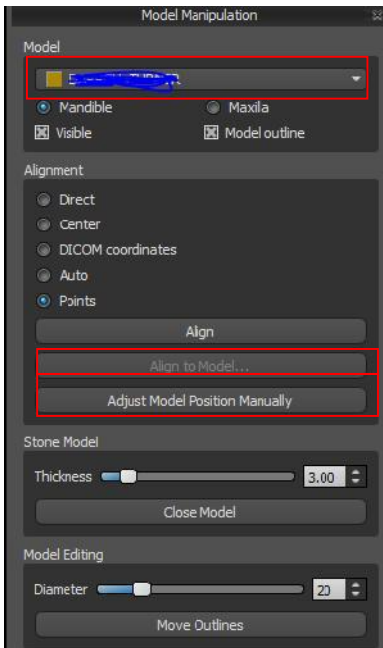
Click the Color box to change the color of the scan appliance.

### REALIGNING SCAN APPLIANCE

If it is necessary to realign the scan appliance manually, follow these steps:

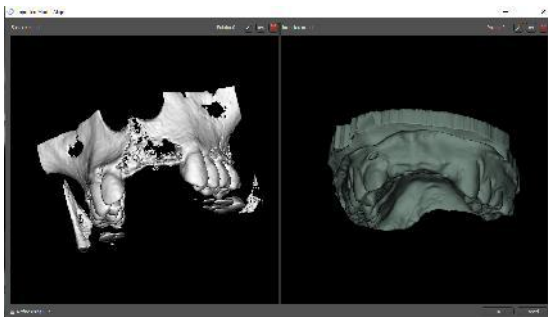


Open the Model Manipulation Panel by clicking on the Panels menu > Model Manipulation.



1) Select the relevant scan appliance / model from the drop down list on the top of the panel.

2) Select points and "Align"



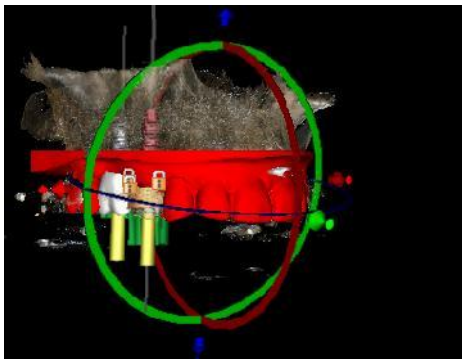
3) In the window that opens, select the markers in both the scan appliance and patient scan by holding "shift" and left clicking on each marker.



## FINE TUNING OF SCAN APPLIANCE POSITIONING

Adjust Model Position Manually

If further fine tuning of the scan appliance position is necessary, click the 'Adjust Model Position Manually' button to control the



widget in the 3D panel allowing for the movement or rotation of the scan appliance.

The scan appliance position can also be moved in a very precise and careful manner by using the arrow keys on the keyboard to move the scan appliance in any direction. Holding "alt" while pressing an arrow will rotate the scan appliance in the relevant direction.